

JUL 31 - AUG 6, 2023

The Brooklyn luxury real estate market, defined as all properties priced \$2M and above, saw 14 contracts signed this week, made up of 5 condos, and 9 houses. The previous week saw 18 deals. For more information or data, please reach out to a Compass agent.

\$2,905,500

Average Asking Price

\$2,845,000

Median Asking Price

\$1,058

Average PPSF

4%

Average Discount

\$40,677,000

Total Volume

181

Average Days On Market

31 Sterling Place in Park Slope entered contract this week, with a last asking price of \$3,950,000. Originally built circa 1872, this townhouse spans approximately 3,600 square feet with 6 beds and 3 full baths. It features a 20-foot-wide footprint with four stories, floor-to-ceiling windows, high ceilings, a rear garden, a full cellar, original entry doors, and much more.

Also signed this week was Unit 833/832 at 360 Furman Street in Brooklyn Heights, with a last asking price of \$3,765,000. Originally built in 1928 and converted in 2008, this loft condo spans 2,331 square feet with 3 beds and 3 full baths. It features wall-to-wall, west-facing windows providing incredible views, high ceilings, an open kitchen with high-end cabinetry and quartz countertops, a primary bedroom with walk-in closet and en-suite spa-like bath, and much more. The building provides a 24-hour doorman, concierge services, a fitness center and yoga room, a parking garage, and many other amenities.

5

Condo Deal(s)

0

Co-op Deal(s)

9

Townhouse Deal(s)

\$2,880,000

Average Asking Price

\$0

Average Asking Price

\$2,919,667

Average Asking Price

\$2,990,000

Median Asking Price

\$0

Median Asking Price

\$2,700,000

Median Asking Price

\$1,394

Average PPSF

N/A

Average PPSF

\$871

Average PPSF

2,308

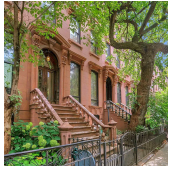
Average SqFt

N/A

Average SqFt

3,691

Average SqFt



31 STERLING PL

Type	Townhouse	Status	Contract
SqFt	3,600	Beds	6
PPSF	\$1,098	Fees	\$931

Park Slope

Ask	\$3,950,000
Baths	3
DOM	18



360 FURMAN ST #833/832

Type	Condo	Status	Contract
SqFt	2,331	Beds	3
PPSF	\$1,616	Fees	\$5,152

Brooklyn Heights

Ask	\$3,765,000
Baths	3
DOM	77

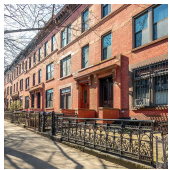


255 STUYVESANT AVE

Type	Townhouse	Status	Contract
SqFt	4,635	Beds	5
PPSF	\$777	Fees	\$576

Bedford Stuyvesant

Ask	\$3,600,000
Baths	4
DOM	N/A



358 7TH ST

Type	Townhouse	Status	Contract
SqFt	3,400	Beds	7
PPSF	\$942	Fees	\$643

Park Slope

Ask	\$3,200,000
Baths	3
DOM	461

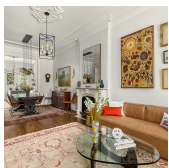


1 CITY POINT #65D

Type	Condop	Status	Contract
SqFt	1,455	Beds	3
PPSF	\$2,097	Fees	N/A

Downtown Brooklyn

Ask	\$3,050,000
Baths	3
DOM	611



400 LAFAYETTE AVE

Type	Townhouse	Status	Contract
SqFt	3,262	Beds	5
PPSF	\$919	Fees	\$420

Bedford Stuyvesant

Ask	\$2,995,000
Baths	4
DOM	N/A

Compass is a licensed real estate broker and abides by Equal Housing Opportunity laws. All material presented herein is intended for informational purposes only. Information is compiled from sources deemed reliable but is subject to errors, omissions, changes in price, condition, sale, or withdrawal without notice. No statement is made as to the accuracy of any description. All measurements and square footages are approximate. This is not intended to solicit property already listed. Nothing herein shall be construed as legal, accounting or other professional advice outside the realm of real estate brokerage.



160 IMLAY ST #PHC3

Red Hook

Type	Condo	Status	Contract	Ask	\$2,990,000
Sqft	4,127	Beds	4	Baths	4
PPSF	\$725	Fees	\$6,428	DOM	465



638 UNION ST

Park Slope

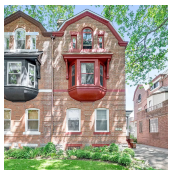
Type	Townhouse	Status	Contract	Ask	\$2,700,000
Sqft	1,980	Beds	3	Baths	3
PPSF	\$1,364	Fees	\$397	DOM	133



1002 BERGEN ST

Crown Heights

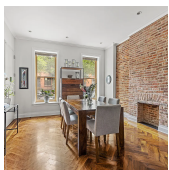
Type	Townhouse	Status	Contract	Ask	\$2,688,000
Sqft	3,327	Beds	4	Baths	5.5
PPSF	\$808	Fees	\$532	DOM	47



1441 UNION ST

Crown Heights

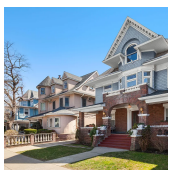
Type	Townhouse	Status	Contract	Ask	\$2,499,000
Sqft	2,466	Beds	5	Baths	2.5
PPSF	\$1,014	Fees	\$582	DOM	61



363A 5TH ST #1

Park Slope

Type	Condo	Status	Contract	Ask	\$2,495,000
Sqft	1,863	Beds	2	Baths	3
PPSF	\$1,340	Fees	\$1,031	DOM	28



1016 BEVERLEY RD

Flatbush

Type	Townhouse	Status	Contract	Ask	\$2,350,000
Sqft	6,200	Beds	6	Baths	2.5
PPSF	\$380	Fees	\$609	DOM	113

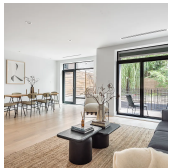
Compass is a licensed real estate broker and abides by Equal Housing Opportunity laws. All material presented herein is intended for informational purposes only. Information is compiled from sources deemed reliable but is subject to errors, omissions, changes in price, condition, sale, or withdrawal without notice. No statement is made as to the accuracy of any description. All measurements and square footages are approximate. This is not intended to solicit property already listed. Nothing herein shall be construed as legal, accounting or other professional advice outside the realm of real estate brokerage.



2303 EAST 65TH ST

Mill Basin

Type	Townhouse	Status	Contract	Ask	\$2,295,000
Sqft	4,341	Beds	5	Baths	3.5
PPSF	\$529	Fees	\$1,317	DOM	130



110 WITHERS ST #1

Williamsburg

Type	Condo	Status	Contract	Ask	\$2,100,000
Sqft	1,762	Beds	3	Baths	2.5
PPSF	\$1,192	Fees	\$2,092	DOM	28

Compass is a licensed real estate broker and abides by Equal Housing Opportunity laws. All material presented herein is intended for informational purposes only. Information is compiled from sources deemed reliable but is subject to errors, omissions, changes in price, condition, sale, or withdrawal without notice. No statement is made as to the accuracy of any description. All measurements and square footages are approximate. This is not intended to solicit property already listed. Nothing herein shall be construed as legal, accounting or other professional advice outside the realm of real estate brokerage.